



UNIVERSITI TUN HUSSEIN ONN MALAYSIA

**PEPERIKSAAN AKHIR
SEMESTER II
SESI 2011/2012**

NAMA KURSUS : PEMBANGUNAN APLIKASI E-DAGANG
KOD KURSUS : DAT 32504
PROGRAM : 3 DAT
TARIKH PEPERIKSAAN : MAC 2012
JANGKA MASA : 3 JAM
ARAHAN : JAWAB SEMUA SOALAN

KERTAS SOALAN INI MENGANDUNGI SEPULUH(10) MUKA SURAT

- S1** (a) Takrifkan e-dagang broker forex. (4 markah)
- (b) Takrifkan Perbankan Internet. (4 markah)
- (c) Bincangkan terma-terma di bawah (12 markah)
- (i) Analisis Fundamental
 - (ii) Indikator Fundamental
 - (iii) Analisis Teknikal
 - (iv) Indikator Teknikal
- S2** (a) Terangkan Pesanan Pasaran dan Pesanan Tertunda. (4 markah)
- (b) Diberi maklumat di bawah
- | | | |
|--------------------------|---|---------|
| Pasangan Mata Wang | : | GBPUSD |
| Nilai Pasangan Mata Wang | : | 1.5717 |
| Hentian Rugi | : | 30 pips |
| Ambilan Untung | : | 60 pips |
- Terangkan bagaimana untuk menetapkan
- (i) Pesanan Takat Belian
 - (ii) Pesanan Hentian Belian
 - (iii) Pesanan Takat Jualan
 - (iv) Pesanan Hentian Jualan
- (16 markah)

- S3** (a) Takrifkan Algorithma Hentian Penjejakan dalam Meta Trader 4.

(5 markah)

- (b) Ilustrasikan kod sumber aturcara Hentian Penjejakan di bawah ini ke rajah carta alir .

(15 markah)

```

if (OrderType() == OP_BUY)
{
    if ((Bid - OrderOpenPrice()) > TSTP)
    {
        if (OrderStopLoss() < (Bid - TSTP))
        {
            OrderModify(OrderTicket(),
OrderOpenPrice(), Bid - TSTP, OrderTakeProfit(), Red);
        }
        else if ((OrderStopLoss() != Bid - StopLoss *
PointValue) && (StopLoss != 0))
            OrderModify(OrderTicket(), OrderOpenPrice(),
Bid - StopLoss * PointValue, OrderTakeProfit(), Red);
        }
    else if (OrderType() == OP_SELL)
    {
        if ((OrderOpenPrice() - Ask) > TrailingStop *
PointValue)
        {
            if ((OrderStopLoss() > (Ask + TrailingStop *
PointValue)) || (OrderStopLoss() == 0))
            {
                OrderModify(OrderTicket(),
OrderOpenPrice(), Ask + TSTP, OrderTakeProfit(), Red);
            }
        }
        else if ((OrderStopLoss() != Ask + StopLoss *
PointValue) && (StopLoss != 0))
            OrderModify(OrderTicket(), OrderOpenPrice(),
Ask + StopLoss * PointValue, OrderTakeProfit(), Red);
        }
    }
}

```

S4 (a) Jelaskan antara Dagangan Manual dan Dagangan Auto.

(6 markah)

(b) Terangkan sistem dagangan mekanikal di bawah.

- (i) Penasihat Pakar
- (ii) Indikator Langganan
- (iii) Skrip

(6 markah)

(c) Diberi keratan aturcara di bawah.

```
#define SIGNAL_NONE 0
#define SIGNAL_BUY 1
#define SIGNAL_SELL 2
#define SIGNAL_CLOSEBUY 3
#define SIGNAL_CLOSESELL 4
```

Tuliskan sebahagian kod sumber aturcara bagi

(i) Signal Begin(Exit Buy)

(ii) Signal Begin(Exit Sell)

(8 markah)

- S5** (a) Jelaskan langkah-langkah utama untuk membangunkan carta dagangan GBPUSD seperti yang ditunjukkan dalam rajah S5 dengan butir-butir di bawah ini:

Period 5 EMA Shift 0 and 5 EMA Shift 2

(5 markah)

- (b) Tunjukkan di mana tempat terbaik untuk

- (i) membuka dagangan JUALAN pendek
- (ii) membuka dagangan BELIAN panjang
- (iii) menutup posisi JUALAN pendek
- (iv) menutup posisi BELIAN panjang

(8 markah)

- (c) Tuliskan sebahagian kod sumber aturcara bagi **expert start function** untuk dagangan BELIAN panjang dan JUALAN pendek dengan diberi maklumat di bawah.

```
double Buy1_1 = iMA(NULL, PERIOD_M5, 5, 0, MODE_EMA,
PRICE_CLOSE, Current + 0);
```

```
double Buy1_2 = iMA(NULL, PERIOD_M5, 5, 2, MODE_EMA,
PRICE_CLOSE, Current + 0);
```

```
double Sell1_1 = iMA(NULL, PERIOD_M5, 5, 0,
MODE_EMA, PRICE_CLOSE, Current + 0);
```

```
double Sell1_2 = iMA(NULL, PERIOD_M5, 5, 2,
MODE_EMA, PRICE_CLOSE, Current + 0);
```

(7 markah)

Q1 (a) Define forex broker e-commerce. (4 marks)

(b) Explain an Internet banking. (4 marks)

(c) Discuss the terms below (12 marks)

- (i) Fundamental Analysis
- (ii) Fundamental Indicators
- (iii) Technical Analysis
- (iv) Technical Indicators

Q2 (a) Explain Market Orders and Pending Orders. (4 marks)

(b) Given the information below

Currency Pair	: GBPUSD
Currency Pair Value	: 1.5717
Stop Loss (S/L)	: 30 pips
Taking Profit (T/P)	: 60 pips

Explain how to place a

- (i) Buy Limit Order
- (ii) Buy Stop Order
- (iii) Sell Limit Order
- (iv) Sell Stop Order

(16 marks)

Q3 (a) Define a Trailing Stop Algorithm in Meta Trader 4.

(5 marks)

(b) Illustrate Trailing Stop source code program below to flow chart diagram.

(15 marks)

```

if (OrderType() == OP_BUY)
{
    if ((Bid - OrderOpenPrice()) > TSTP)
    {
        if (OrderStopLoss() < (Bid - TSTP))
        {
            OrderModify(OrderTicket(),
OrderOpenPrice(), Bid - TSTP, OrderTakeProfit(), Red);
        }
        else if ((OrderStopLoss() != Bid - StopLoss *
PointValue) && (StopLoss != 0))
            OrderModify(OrderTicket(), OrderOpenPrice(),
Bid - StopLoss * PointValue, OrderTakeProfit(), Red);
        }
    else if (OrderType() == OP_SELL)
    {
        if ((OrderOpenPrice() - Ask) > TrailingStop *
PointValue)
        {
            if ((OrderStopLoss() > (Ask + TrailingStop *
PointValue)) || (OrderStopLoss() == 0))
            {
                OrderModify(OrderTicket(),
OrderOpenPrice(), Ask + TSTP, OrderTakeProfit(), Red);
            }
        }
        else if ((OrderStopLoss() != Ask + StopLoss *
PointValue) && (StopLoss != 0))
            OrderModify(OrderTicket(), OrderOpenPrice(),
Ask + StopLoss * PointValue, OrderTakeProfit(), Red);
        }
    }
}

```

Q4 (a) Describe between Manual Trading and Auto Trading.

(6 marks)

(b) Explain mechanical trading systems below:

- (i) Expert Advisors
- (ii) Customs Indicators
- (iii) Scripts

(6 marks)

(c) Given the following source code program fragment,

```
#define SIGNAL_NONE 0
#define SIGNAL_BUY 1
#define SIGNAL_SELL 2
#define SIGNAL_CLOSEBUY 3
#define SIGNAL_CLOSESELL 4
```

Write part of code base for

- (i) Signal Begin(Exit Buy)
- (ii) Signal Begin(Exit Sell)

(8 marks)

- Q5 (a)** Describe the stages in the development of GBPUSD trading Chart as given in Figure Q5 with details below:

Period 5 EMA Shift 0 and 5 EMA Shift 2

(5 marks)

- (b) Show where is a good place to
- (i) Opening a short **SELL** trade
 - (ii) Opening a long **BUY** trade
 - (iii) Closing a short **SELL** position
 - (v) Closing a long **BUY** position

(8 marks)

- (c) Write part of code base program for **expert start function** for long trades and short trades with information given below.

```
double Buy1_1 = iMA(NULL, PERIOD_M5, 5, 0, MODE_EMA,
PRICE_CLOSE, Current + 0);
```

```
double Buy1_2 = iMA(NULL, PERIOD_M5, 5, 2, MODE_EMA,
PRICE_CLOSE, Current + 0);
```

```
double Sell1_1 = iMA(NULL, PERIOD_M5, 5, 0, MODE_EMA,
PRICE_CLOSE, Current + 0);
```

```
double Sell1_2 = iMA(NULL, PERIOD_M5, 5, 2, MODE_EMA,
PRICE_CLOSE, Current + 0);
```

(7 marks)

PEPERIKSAAN AKHIR

SEMESTER/SESI : SEMESTER II/2011/2012

KURSUS : 3 DAT

NAMA KURSUS : PEMBANGUNAN APLIKASI E-DAGANG

KOD KURSUS : DAT32504

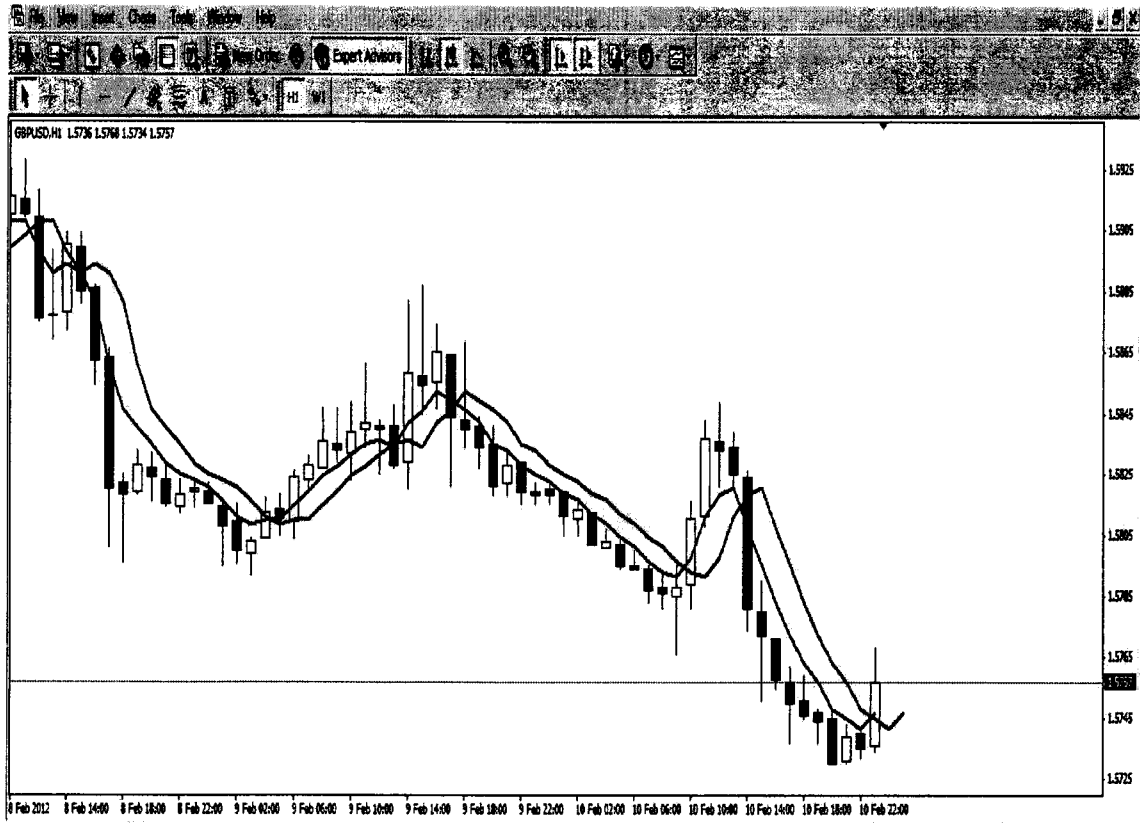


Figure Q5/Rajah S5