

CONFIDENTIAL



UNIVERSITI TUN HUSSEIN ONN MALAYSIA

**FINAL EXAMINATION
SEMESTER II
SESSION 2013/2014**

COURSE NAME : ELECTROMAGNETIC COMPATIBILITY
COURSE CODE : BEB 41703
PROGRAMME : BEJ
EXAMINATION DATE : JUNE 2014
DURATION : 3 HOURS
INSTRUCTION : ANSWER FIVE (5) QUESTIONS ONLY

THIS QUESTION PAPER CONSISTS OF SIX (6) PAGES

CONFIDENTIAL

- Q1** You are an EMC test-engineer working in a company producing switched-mode power supply (SMPS). The R&D department has come up with a new design of the equipment which must be marketed to USA in 3 months time. Your main responsibility is to ensure that the product pass all the EMC tests within the stipulated time frame.
- (i) List THREE (3) EMC tests that should be conducted on the SMPS.
(6 marks)
 - (ii) Explain the measurement procedures for ONE (1) of the tests in part (i).
(8 marks)
 - (iii) It was found that the SMPS emission exceeds the permitted limit at 200 MHz. What countermeasures that you would suggest to the design engineer?
(4 marks)
 - (iv) What are your EMC related advices on the packaging of the SMPS?
(2 marks)
- Q2**
- (a) Common-mode currents can generally produce higher radiated emissions than differential-mode currents. Justify this statement by using illustration and analytical formulation
(5 marks)
 - (b) The radiated emissions of a cable are being measured as shown in Figure **Q2(b)** at 120 MHz. The antenna factor at 120 MHz is 10 dB/m and the antenna is oriented parallel to and in the plane of the wires. The antenna is connected to a spectrum analyzer using a 5 meter length of RG58U coaxial cable with 0.15 dB/m loss at 120 MHz. The measurement is done in a semi-anechoic chamber in accordance to the MS CISPR 22 Class B standard.
 - (i) Calculate the magnitude of the total electric field at the antenna due to the differential-mode and common-mode currents.
(8 marks)
 - (ii) Will the emission in part Q2(b)(i) pass the MS CISPR 22 Class B test?
(2 marks)
 - (iii) What is the magnitude of the voltage measured by the spectrum analyzer?
(5 marks)

Q3 (a) Power supply filters are normally employed in most electronic products to reduce conducted emissions so as to comply with regulatory requirements.

(i) Sketch and label clearly a typical power supply filter. (5 marks)

(ii) Common-mode choke is an important element in a power supply filter to block unwanted common-mode conducted emissions, Explain the operation of a common-mode choke. (5 marks)

(b) A Line Impedance Stabilization Network (LISN) is to be used to measure the conducted emission of a printer which has an oscillator circuit. The conducted emission current I_p on the phase or live wire of the printer's power supply is found to have the following Fourier series:

$$I_p = 2.5 + \frac{10}{\pi} \sin(2\pi 2 \times 10^6 t) + \frac{10}{3\pi} \sin(2\pi 6 \times 10^6 t) + \dots (\mu\text{A})$$

(i) Sketch and label the expected output of the spectrum analyzer connected to the LISN. Assume the power line has a 50Ω impedance and all losses can be neglected. (5 marks)

(ii) Design a simple low-pass filter to remove emissions above 4 MHz. Show the circuit layout and the value of the components used. Assume the line impedance and printer impedance to be 50Ω . (5 marks)

Q4 (a) Elaborate on each of the following statements:

(i) Electrostatic charges on a person can cause fire at a petrol station if he or she does not take extra precautions. (3 marks)

(ii) Problems caused by an electrostatic discharge event can be prevented by creating an inherent immunity to the ESD event in the electronic circuitry through software (i.e software immunity). (3 marks)

- (b) A 10 V/m, 100 MHz uniform plane wave is incident on a two-wire line as shown in Figure **Q4(b)**. The wire is surrounded by Teflon ($\epsilon_r = 2.1$) as insulation dielectric with spacing of 0.5 cm. The wires have a radius of 1.5 mm.
- (i) Calculate the induced voltage V . State your assumptions. (10 marks)
- (ii) If the two wire line is susceptible to the induced voltage V calculated in part Q4b(i), find the positions where V can be minimized by rotating the circuit along the x-axis. (4 marks)
- Q5** (a) You are required to provide credible facts (equations and figures) to support the following statements on electromagnetic shielding.
- (i) It is difficult to shield low-frequency magnetic field. (3 marks)
- (ii) Apertures considerably reduce the effectiveness of a shield. (3 marks)
- (b) A barrier made of copper ($\mu_r = 1$, $\epsilon_r = 1$, $\sigma = 5.8 \times 10^7$ S/m) of thickness 0.1 mm is to be used as an enclosure to shield a digital circuit at 1 MHz.
- (i) Calculate the skin depth and total loss (reflection loss + absorption loss + multiple reflection loss) of the barrier (in dB). Assume that the field incident on the barrier is a far-field source and the effect of openings on the enclosure can be neglected. (10 marks)
- (ii) An aperture of maximum linear dimension 5 cm is introduced on the barrier for the purpose of inserting cables. Calculate the shielding effectiveness of the aperture (in dB) and the effective shield of the barrier. (4 marks)

- Q6** (a) Proper grounding system is essential to ensure compliance to EMC. Interpret the following statements which are related to grounding system.
- (i) Single point grounding is effective at low frequency (below 100 kHz) while multipoint grounding is used at high frequency. (3 marks)
 - (ii) The return path for high frequency current is the path with least inductance. (4 marks)
 - (iii) Many ground system problems occur as the result of common impedance coupling. (3 marks)
- (b) You are given a task by your manager to design the layout of the PCB of a new product which consists of digital and analog circuits. The circuits have clock, amplifier, microprocessor, RAM, controller, ASIC, connectors, power supply and grounding. The clock is generating pulses at 3 GHz. Suggest the layout of the PCB by taking into consideration most aspects of EMC to ensure compliance to international standards and satisfaction to customers. (10 marks)

END OF QUESTION

FINAL EXAMINATION

SEMESTER/SESSION : SEM 11 / 2013/2014

PROGRAMME : BEJ

COURSE NAME : ELECTROMAGNETIC COMPATIBILITY

COURSE CODE : BEB 41703

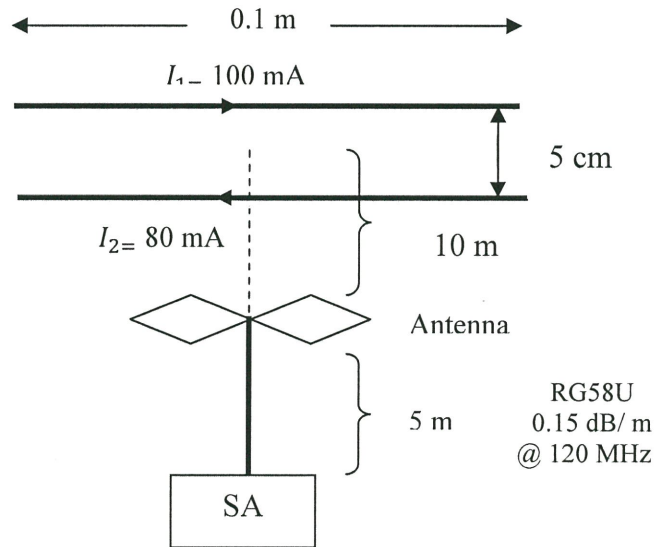


FIGURE Q2(b)

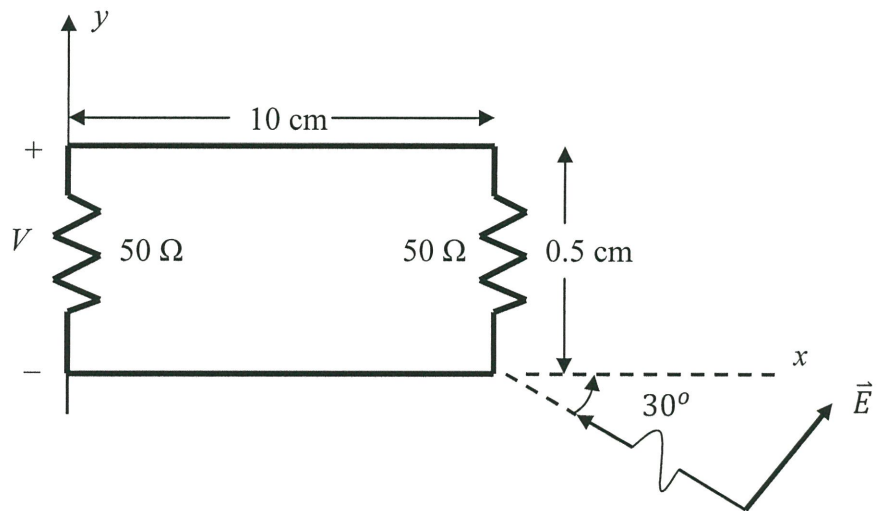


FIGURE Q4(b)