

CONFIDENTIAL



UNIVERSITI TUN HUSSEIN ONN MALAYSIA

**FINAL EXAMINATION
SEMESTER I
SESSION 2014/2015**

COURSE NAME : INDUSTRIAL ELECTRONICS
COURSE CODE : DAE 32003
PROGRAMME : 3 DAE
EXAMINATION DATE : DECEMBER 2014/
JANUARY 2015
DURATION : 2 HOURS 30 MINUTES
INSTRUCTIONS : ANSWER **FOUR (4)**
QUESTIONS ONLY

THIS QUESTION PAPER CONSISTS OF SEVENTEEN (17) PAGES

CONFIDENTIAL

- Q1** (a) Explain the operation of the timing function in (i), (ii) and (iii).
- (i) On delay. (2 marks)
 - (ii) Off delay. (2 marks)
 - (iii) One Shot delay. (2 marks)
- (b) Based on **Figure Q1(b)**:
- (i) What is A and B? (2 marks)
 - (ii) What type of relay is shown in **Figure Q1(b)**? (2 marks)
 - (iii) Explain the purpose of relay in an electrical circuit. (2 marks)
 - (iv) Explain the circuit operation during de-energize and energize state. (5 marks)
- (c) Based on **Figure Q1(c)**:
- (i) Write a truth table for this circuit's function, and determine the logic function it represents. (4 marks)
 - (ii) Modify the circuit in **Figure Q1(c)** so that it will represent an OR logic function. (Hint: Add one more +V power supply and re-arrange the contact's connection of the bottom relay) (4 marks)

- Q2** (a) **Figure Q2(a)(i)** shows the control circuit for a packaging machine. The control circuit is used to detect and count the number of products being carried out on an assembly line. When it counts five products, the circuit energizes a solenoid. The solenoid is energized for a period of two seconds and is then shut off, causing it to retract.
- (i) Fill in A, B and C from the ladder diagram in **Figure Q2(a)(ii)** with the proper elements and addresses. (3 marks)
- (ii) Based on Q2(a)(i), write the mnemonic code for the system. (4 marks)
- (b) **Figure Q2(b)** shows the mnemonic code for a car park system. Draw the ladder diagram for that particular mnemonic code. (12 marks)
- (c) **Figure Q2(c)** shows the ladder diagram for **two (2)** lamps control. Explain the condition of Lamp 1 and Lamp 2. Briefly explain:
- (i) Condition 1: Only button C is pushed. (2 marks)
- (ii) Condition 2: Only button A and C are pushed. (2 marks)
- (iii) Condition 3: All buttons are pushed. (2 marks)
- Q3** (a) **Figure Q3(a)(i)** and **Table Q3** shows **three (3)** cylinders system controlled by a main single start button (PB) and three (3) conditional sensors; A, B and C. The process sequence is shown as below.
- All cylinders are in retract position during initial position except for cylinder B that in extend position.(Refer **Figure Q3(a)(i)** diagram)
 - Start button is pressed.
 - Cylinder B retracts.
 - Sensor B detects full retraction for Cylinder B.
 - After 3 secs, cylinder A extends.
 - Sensor A detects maximum extension for cylinder A.
 - After 4 secs, cylinder C extends.
 - All system RESET/OFF when sensor C detected maximum extension for cylinder C.

Based on the process sequence above:

- (i) Draw a pneumatic diagram for cylinder A only (During De-Energized and Energized state).
(16 marks)
- (ii) Based from the ladder diagram in **Figure Q3(a)(ii)**, what is the elements that need to be place at A,B,C,D and E in order for the system to function properly.
(5 marks)

(b) **Figure Q3(b)** shows an example of a ladder diagram using timer.

- (i) State type of ladder it is?
(2 marks)
- (ii) If the ladder in **Figure Q3(b)** is modified where A is placed with 0.00 input normally close (NC) contact, what type of ladder will it be?
(2 marks)

Q4 (a) **Figure Q4(a)(i)** shows the game buzzer control system and **Table Q4(a)** shows the IO assignment. The requirement are as follows:

- After the host had finished with the question, the 3 players will press the switch in front of them to fight to be first to answer the question.
- The buzzer will sound for 10 seconds after any one of the player has touched the switch.
- The light indicator in front of each player will light up and only reset by host switch.

From ladder diagram in **Figure Q4(a)(ii)**, please fill in the box from A to E with appropriate elements and addresses.

(13 marks)

- (b) **Figure Q4(b)(i)** and **Table Q4(b)** shows the PLC used to start and stop the motors of a segmented conveyor belt. This allows only conveyor segment carrying an object to move. The position of an object is detected by a proximity sensor located next to each conveyor segment. As long as the object is within the detecting range of the proximity sensor in each conveyor segment, that particular motor will work. If the object moves beyond the range, a timer is activated for 2 seconds and the motor of that conveyor segment will stop.

The operation is as follows:

- Motor 3 will always on.
- Motor 2 turns on when sensor 3 detects the object.
- Motor 2 is on until Motor 1 is turned on and the object is out of detection range of sensor 2.
- Motor 1 turns on when sensor 2 detect the object.
- Motor 1 is on until object is out of detection range of sensor 1.

From ladder diagram in **Figure Q4(b)(ii)**, please fill in the box from A to E with appropriate elements and addresses.

(12 marks)

- Q5** (a) Explain what it means by inverting and non-inverting input. (3 marks)

- (b) From **Figure Q5(b)**, all value R and V are stated as below:
 $R1 = 5k\Omega$, $R2 = 4k\Omega$, $R3 = 2k\Omega$, $R4 = 6k\Omega$, $R5 = 10k\Omega$, $R6 = 8k\Omega$
 $R7 = 15k\Omega$, $V1 = 5V$, $V2 = 10V$.

- (i) Name types of Op Amp from the circuit. (3 marks)

- (ii) Find the value for $V3$, $V4$ and $V5$ (7 marks)

- (c) Given a differentiator circuit and it's V_{IN} ramp input voltage shown in **Figure Q5(c)**. The values of the resistors and capacitor are stated as:
 $R_F = 2k\Omega$, $R1 = 10k\Omega$, $C = 0.010\mu F$.

- (i) Sketch and label the values of the output signal, V_{OUT} . (10 marks)

- (ii) Calculate the frequency where the circuit will stop acting as a differentiator. (2 marks)

- Q6** (a) **Figure Q6(a)** shows one type of solenoid valve. State the type of the valve?
(3 marks)
- (b) **Figure Q6(b)** is a symbol for a valve. Describe the operation of the valve when the solenoid is energized and deenergized.
(4 marks)
- (c) What does the symbols in **Figure Q6(c)** represent?
(6 marks)
- (d) A conveyor system works as follows :
- A start button is used to turn on a conveyor belt A that brings bottles to a filling station. Sensor S1 placed at the centre of conveyor A will stop the conveyor belt A upon detecting the bottle. Here a valve will open for 2 seconds for filling liquid into the bottle. After that the conveyor will move again until the bottle is sensed by sensor S2 at the end of the conveyor. Conveyor A will stop again and a solenoid is energized for 3 seconds for a piston to push the bottle onto conveyor belt B. The process is repeated for other bottles until a stop switch is pressed.
- (i) List out the input and output devices for this system.
(4 marks)
- (ii) Draw a motion diagram for this problem.
(8 marks)

- END OF QUESTION -

FINAL EXAMINATION

SEMESTER / SESSION : SEM I / 2014/2015
COURSE : INDUSTRIAL ELECTRONICS

PROGRAMME : 3 DAE
COURSE CODE : DAE 32003

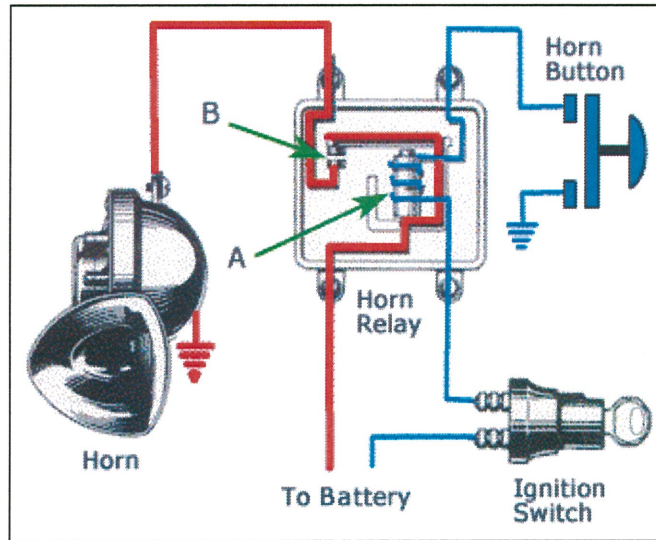


FIGURE Q1(b)

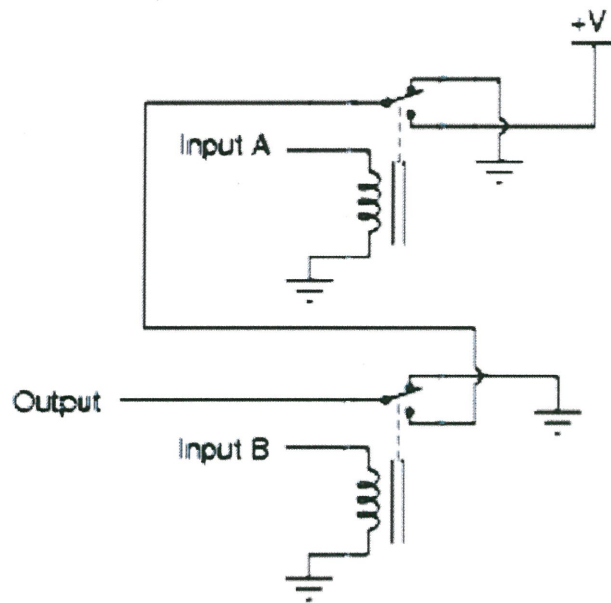
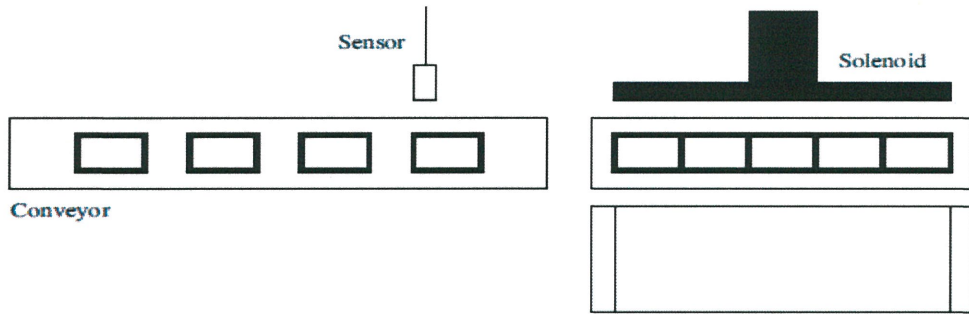


FIGURE Q1 (c)

FINAL EXAMINATION

SEMESTER / SESSION : SEM I / 2014/2015
 COURSE : INDUSTRIAL ELECTRONICS

PROGRAMME : 3 DAE
 COURSE CODE : DAE 32003



Input	Device
00000	Sensor

Output	Device
01000	Conveyor
01001	Solenoid

Others	
CNT 047	Product counter
TIM 000	Solenoid energizer timer

FIGURE Q2(a)(i)

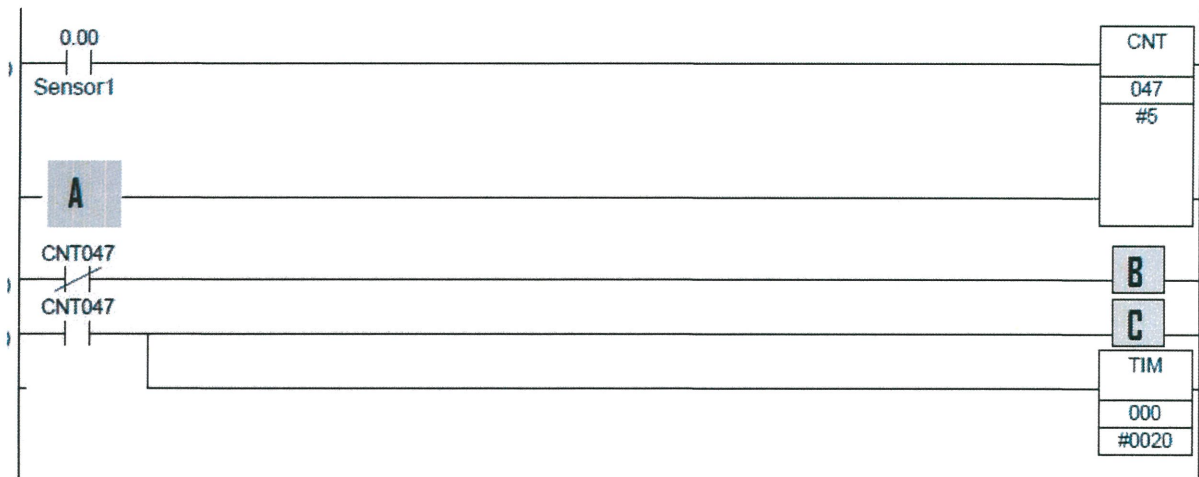


FIGURE Q2(a)(ii)

FINAL EXAMINATION

SEMESTER / SESSION : SEM I / 2014/2015
 COURSE : INDUSTRIAL ELECTRONICS

PROGRAMME : 3 DAE
 COURSE CODE : DAE 32003

Address	Instruction	Data
0000	LD	0.00
0001	DIFU(13)	HR1.01
0002	LD	0.01
0003	DIFD(14)	HR1.02
0004	LD	HR1.01
0005	ADD(30)	HR0
		#1
		HR0
0006	LD	HR1.02
0007	SUB(31)	HR0
		#1
		HR0
0008	LD	P_On
0009	CMP(20)	#30
		HR0
0010	AND	P_EQ
0011	OUT	100.00
0012	END	

FIGURE Q2(b)

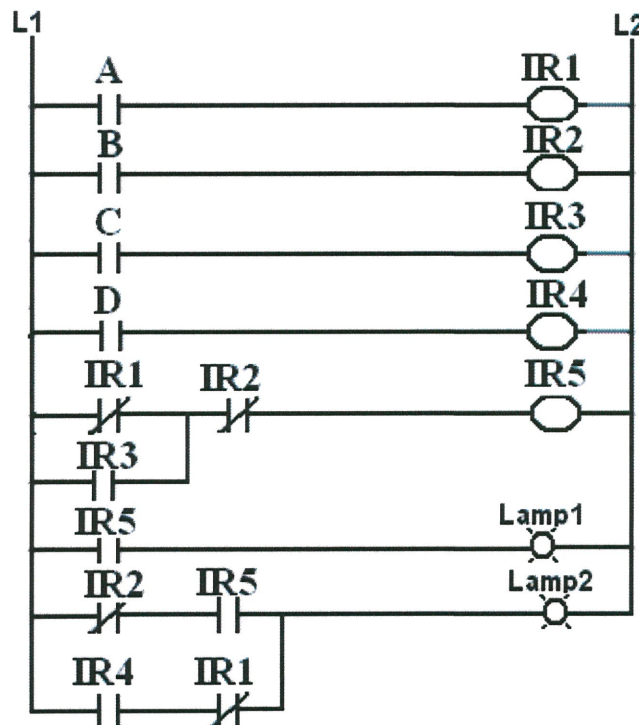


FIGURE Q2(c)

FINAL EXAMINATION

SEMESTER / SESSION : SEM I / 2014/2015
 COURSE : INDUSTRIAL ELECTRONICS

PROGRAMME : 3 DAE
 COURSE CODE : DAE 32003

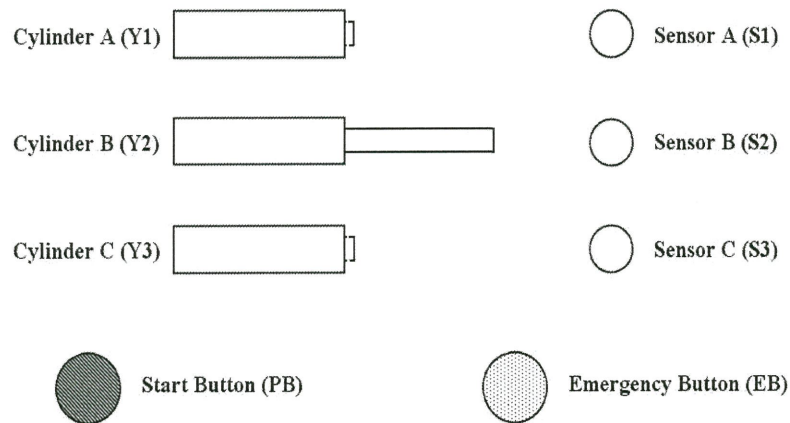


FIGURE Q3(a)(i)

TABLE Q3: IO ASSIGNMENTS

Item	Symbols	Description	Initial State
Cylinder A	Y1	Single Acting (3/2 Way Valve)	NC
Cylinder B	Y2	Single Acting (3/2 Way Valve)	NO
Cylinder C	Y3	Single Acting (3/2 Way Valve)	NC
Start Button	PB	Single Pole Spring Return	NO
Sensor A	S1	Limit Switch w/o latching	NO
Sensor B	S2	Limit Switch w/o latching	NO
Sensor C	S3	Limit Switch w/o latching	NO

FINAL EXAMINATION

SEMESTER / SESSION : SEM I / 2014/2015
 COURSE : INDUSTRIAL ELECTRONICS

PROGRAMME : 3 DAE
 COURSE CODE : DAE 32003

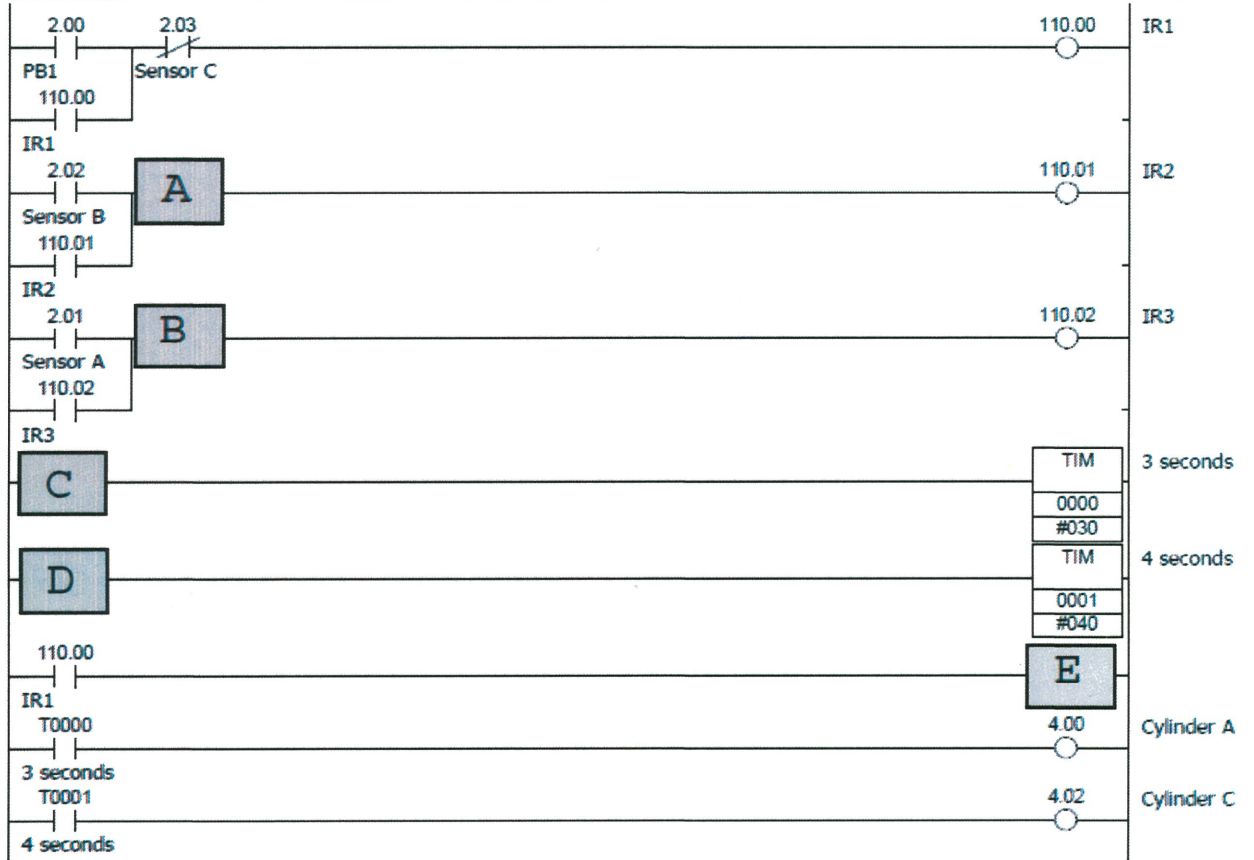


FIGURE Q3(a)(ii)



FIGURE Q3(b)

FINAL EXAMINATION

SEMESTER / SESSION : SEM I / 2014/2015
 COURSE : INDUSTRIAL ELECTRONICS

PROGRAMME : 3 DAE
 COURSE CODE : DAE 32003

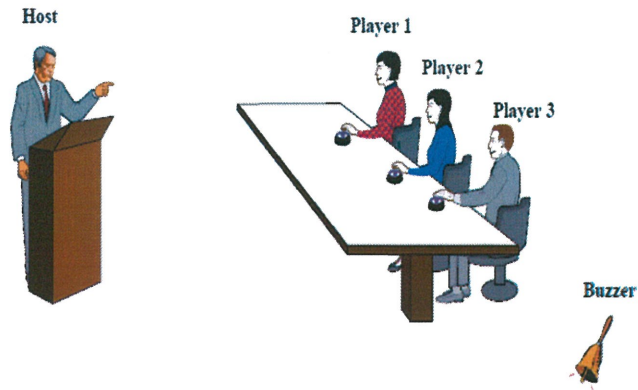


FIGURE Q4(a)(i)

TABLE Q4(a): IO ASSIGNMENTS

Input	Device
0000	PB1
0001	PB2
0002	PB3
0003	RST (reset)

Output	Device
0100	Buzzer
0101	Player 1 light
0102	Player 2 light
0103	Player 3 light

FINAL EXAMINATION

SEMESTER / SESSION : SEM I / 2014/2015
 COURSE : INDUSTRIAL ELECTRONICS

PROGRAMME : 3 DAE
 COURSE CODE : DAE 32003

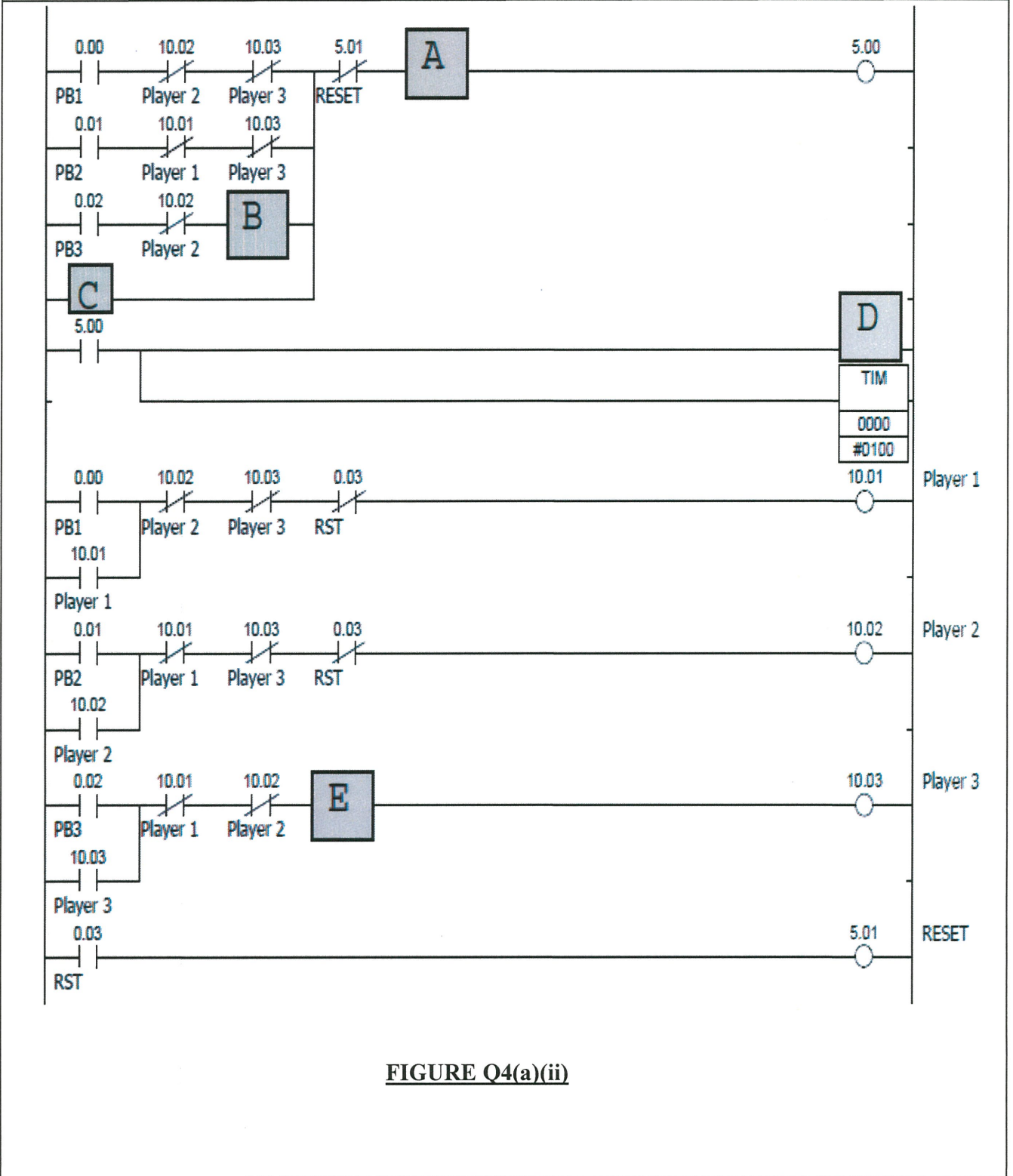


FIGURE Q4(a)(ii)

FINAL EXAMINATION

SEMESTER / SESSION : SEM I / 2014/2015
 COURSE : INDUSTRIAL ELECTRONICS

PROGRAMME : 3 DAE
 COURSE CODE : DAE 32003

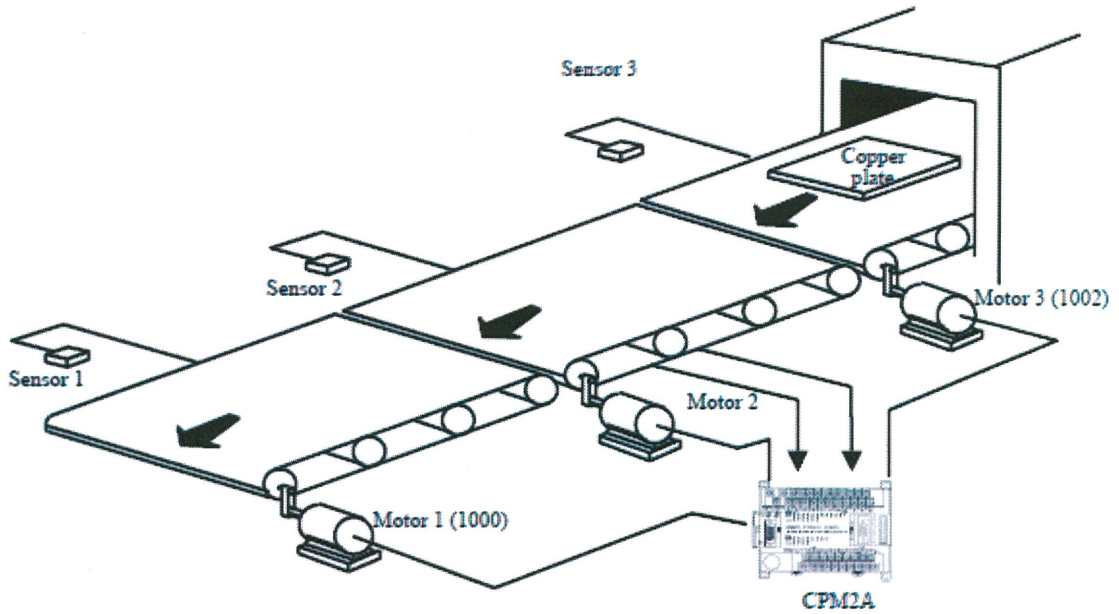


FIGURE Q4(b)(i)

TABLE Q4(b): IO ASSIGNMENTS

Input	Devices	Output	Devices
00000	Sensor 1	01000	Motor 1
00001	Sensor 2	01001	Motor 2
00002	Sensor 3	01002	Motor 3

FINAL EXAMINATION

SEMESTER / SESSION : SEM I / 2014/2015
 COURSE : INDUSTRIAL ELECTRONICS

PROGRAMME : 3 DAE
 COURSE CODE : DAE 32003

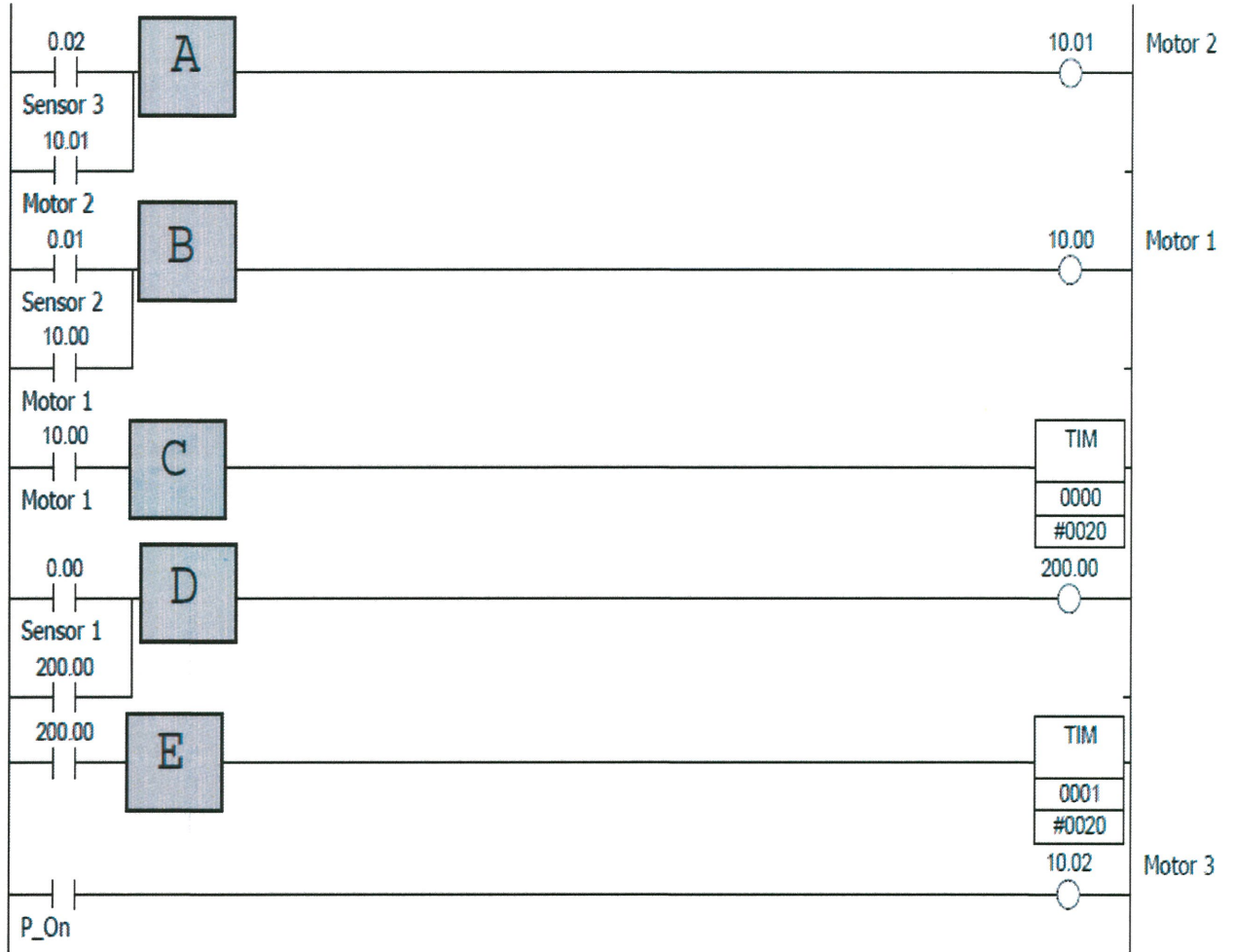


FIGURE Q4(b)(ii)

FINAL EXAMINATION

SEMESTER / SESSION : SEM I / 2014/2015
 COURSE : INDUSTRIAL ELECTRONICS

PROGRAMME : 3 DAE
 COURSE CODE : DAE 32003

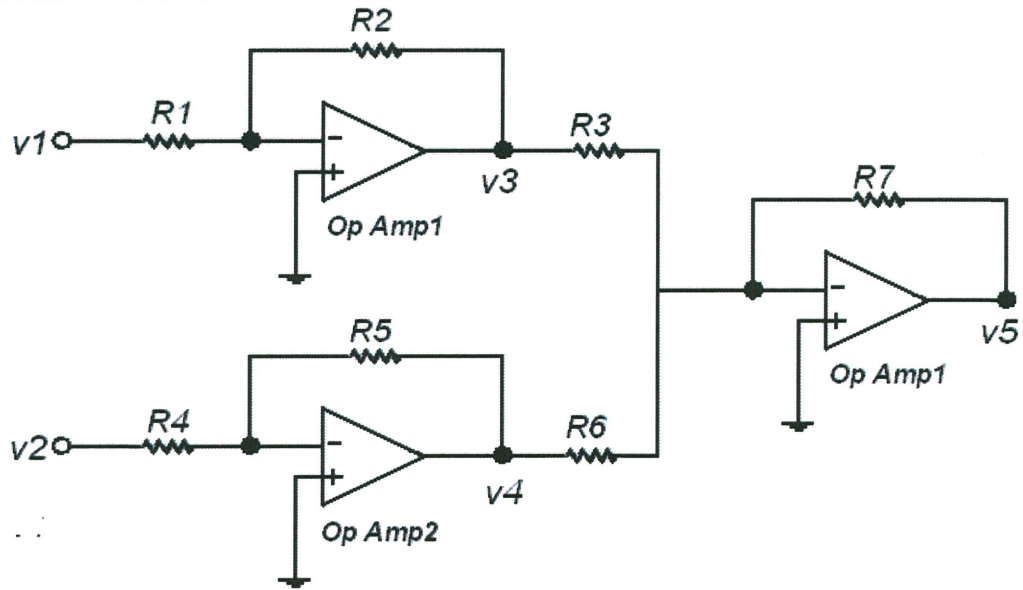


FIGURE Q5(b)

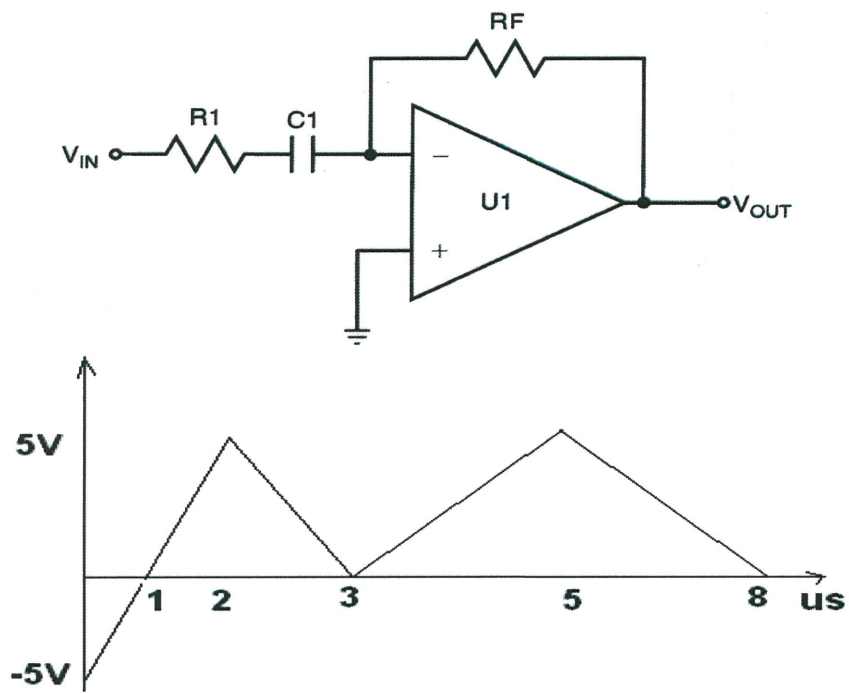


FIGURE Q5(c)

FINAL EXAMINATION

SEMESTER / SESSION : SEM I / 2014/2015
 COURSE : INDUSTRIAL ELECTRONICS

PROGRAMME : 3 DAE
 COURSE CODE : DAE 32003

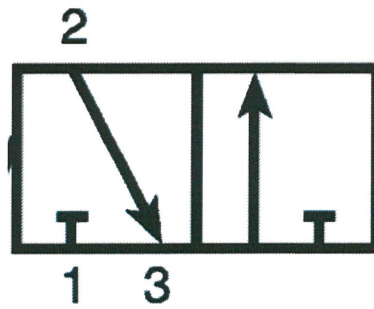


FIGURE Q6(a)

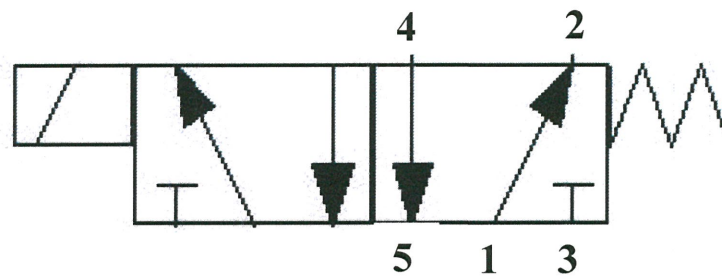


FIGURE Q6(b)

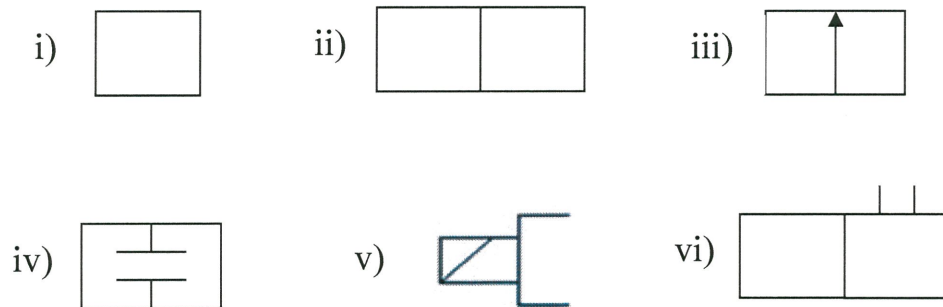


FIGURE Q6(c)