

CONFIDENTIAL



UNIVERSITI TUN HUSSEIN ONN MALAYSIA

**FINAL EXAMINATION
SEMESTER II
SESSION 2021/2022**

- COURSE NAME : STRUCTURAL ANALYSIS
- COURSE CODE : BPD 20403
- PROGRAMME CODE : BPC
- EXAMINATION DATE : JULY 2022
- DURATION : 3 HOURS
- INSTRUCTION :
1. ANSWER ALL QUESTIONS
 2. THIS FINAL EXAMINATION IS CONDUCTED VIA **CLOSED BOOK**
 3. STUDENTS ARE **PROHIBITED** TO CONSULT THEIR OWN MATERIAL OR ANY EXTERNAL RESOURCES DURING THE EXAMINATION CONDUCTED VIA CLOSED BOOK

THIS QUESTION PAPER CONSIST OF SIX (6) PAGES

CONFIDENTIAL

TERBUKA

- Q1** (a) A structural support is a part of a building or structure that provides the necessary stiffness and strength in order to resist the internal forces and withstand the loads.

Differentiate **FOUR (4)** types of structural support.

(8 marks)

- (b) A simply supported beam as shown in **Figure Q1** in **Appendix I** is supported with pin and roller at point A and C. The uniform distributed loads of 22 kN/m is loaded at points B to C and a moment of 57.5 kN/m at point D.

Calculate the reaction forces at points A and C.

(12 marks)

- Q2** A structure frame as shown in **Figure Q2** in **Appendix I** is loaded with a concentrated load of 25 kN at points B to C. The frame is pin support at point A and a roller support at point D.

- (a) Analyse the stability of the frame.

(8 marks)

- (b) Calculate the internal forces of member AB, BC and CD by using the method of section.

(12 marks)

- Q3** A beam as shown in **Figure Q3** in **Appendix II** is loaded with 10 kN/m uniform distributed load at points C to D and 15 kN concentrated load at point C and 25 kN at point E. The beam is pin support at point A and roller support at point B.

- (a) Calculate the reaction forces at points A and B.

(6 marks)

- (b) Analyse Shear Force Diagram (SFD) and Bending Moment Diagram (BMD) at point A, B, C, D and E.

(14 marks)



- Q4** A simply supported beam as shown in **Figure Q4** in **Appendix II** is subjected to uniform distributed load of 22 kN/m from A to B, and point loads of 25 kN and 15 kN at points C and D respectively. The beam is supported with roller support at both ends A and E. Given the value of elastic modulus, $E = 200 \text{ kN/mm}^2$ and moment inertia, $I = 10^8 \text{ mm}^4$.
- (a) Calculate the reaction forces at points A and E. (6 marks)
- (b) Calculate the slope and deflection at point C using Macaulay method. (14 marks)
- Q5** A plane truss as shown in **Figure Q5** in **Appendix III** is supported with pin and roller at point A and H respectively. The point loads imposed are 20 kN at point B, 30 kN at point D, and 40 kN at point F.
- (a) Analyse the truss determinacy. (5 marks)
- (b) Calculate the internal forces of each member by using the method of joint. (15 marks)

- END OF QUESTIONS -

FINAL EXAMINATION

APPENDIX I

SEMESTER / SESSION: SEM II / 2021/2022
COURSE NAME : STRUCTURAL ANALYSIS

PROGRAMME CODE : 2BPC
COURSE CODE : BPD 20403

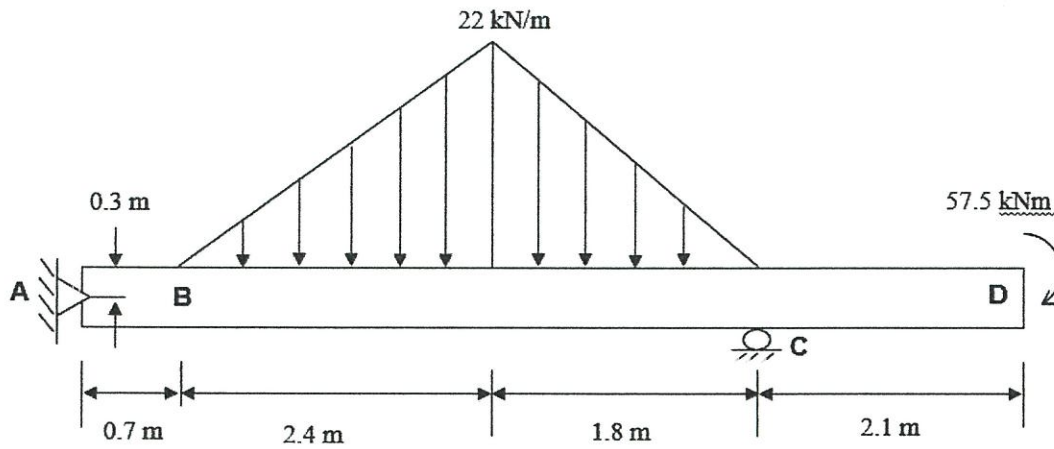


Figure Q1: Simply Supported Beam

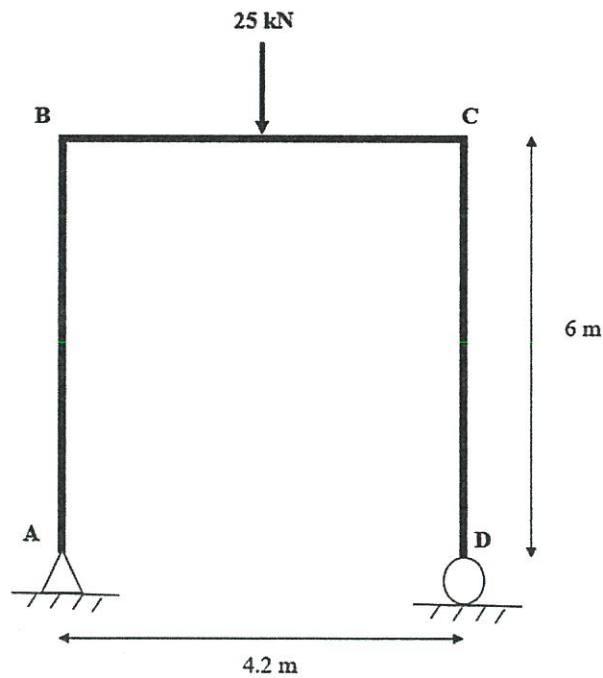


Figure Q2: Structure Frame

TERBUKA

FINAL EXAMINATION

APPENDIX II

SEMESTER / SESSION: SEM II / 2021/2022
COURSE NAME : STRUCTURAL ANALYSIS

PROGRAMME CODE : 2BPC
COURSE CODE : BPD 20403

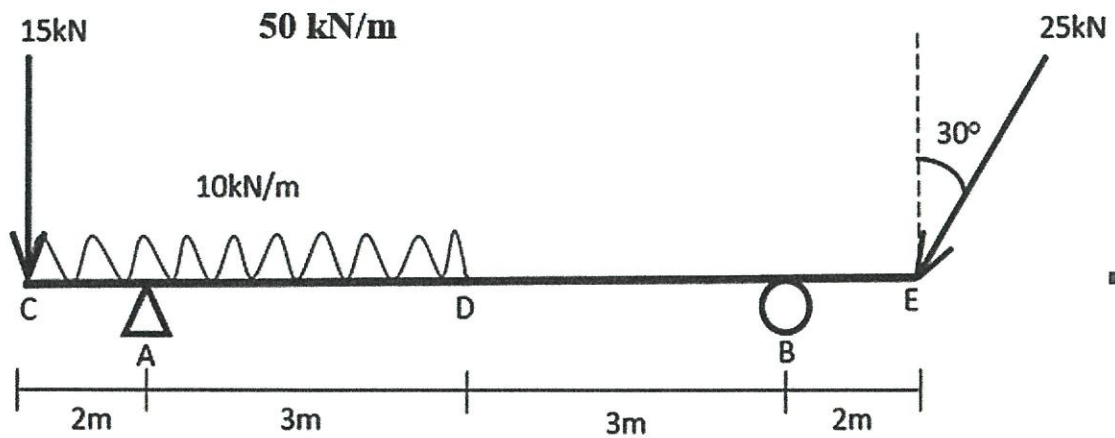


Figure Q3: A Beam

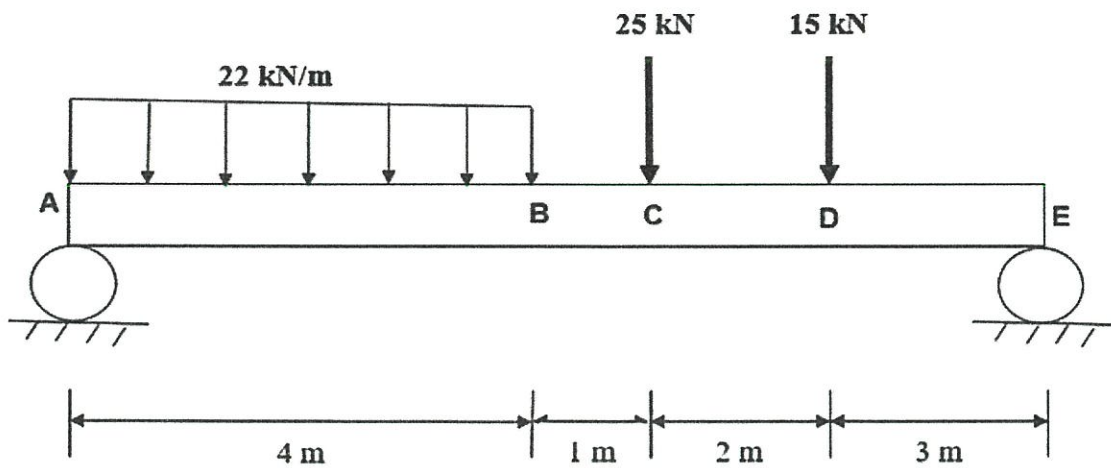


Figure Q4: A Simply Supported Beam

TERBUKA

FINAL EXAMINATION

APPENDIX III

SEMESTER / SESSION: SEM II / 2021/2022
COURSE NAME : STRUCTURAL ANALYSIS

PROGRAMME CODE : 2BPC
COURSE CODE : BPD 20403

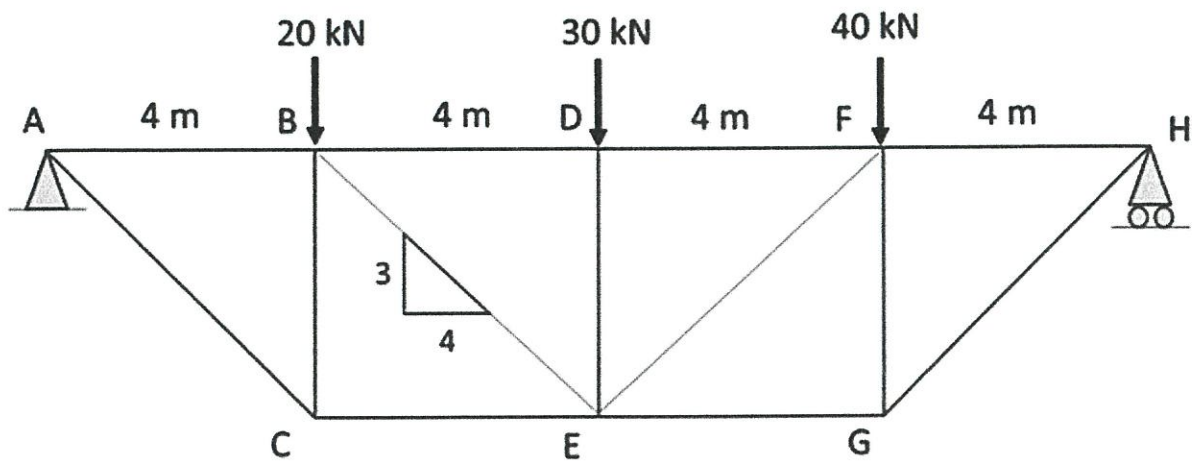


Figure Q5: A Plane Truss

TERBUKA