



UNIVERSITI TUN HUSSEIN ONN MALAYSIA

**FINAL EXAMINATION
(ONLINE)
SEMESTER I
SESSION 2020/2021**

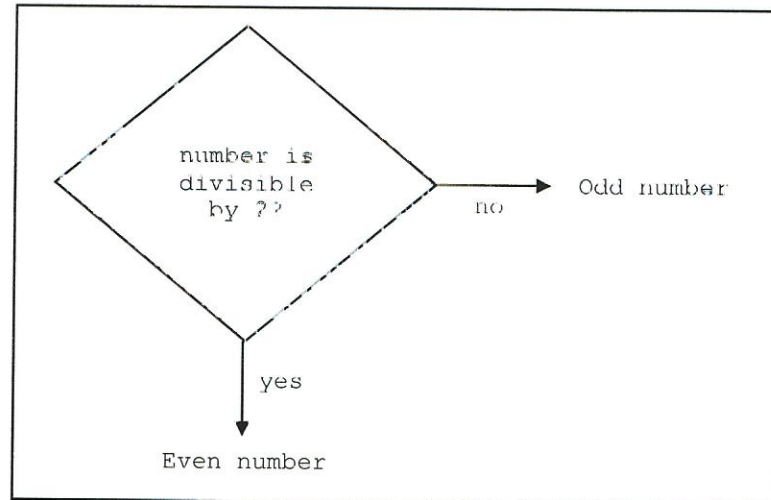
COURSE NAME : DOTNET PROGRAMMING
COURSE CODE : BIE 33103
PROGRAMME CODE : BIP / BIW
EXAMINATION DATE : JANUARY / FEBRUARY 2021
DURATION : 3 HOURS
INSTRUCTION : A) ANSWER ALL QUESTIONS
B) STUDENTS SHOULD
UPLOAD (PDF/WORD
FORMAT) WITHIN 30
MINUTES AFTER
EXAMINATION PERIOD

THIS QUESTION PAPER CONSISTS OF FIVE (5) PAGES

CONFIDENTIAL

TERBUKA

- Q1** Write a C# console code program using conditional operators to determine whether a number entered is an even or odd according to the information in **FIGURE Q1**.

**FIGURE Q1**

(10 marks)

- Q2** (a) Explain a C# code program in **FIGURE Q2**.

```
static void Main(string[] args)
{
    Thread thread1 = new Thread(new
    ThreadStart(DisplayInfo));
    thread1.Start();
    Console.WriteLine("Main thread execution completed!");
}

static void DisplayInfo()
{
    int i=0;
    while (i<=3)
    {
        Thread.Sleep(3000);
        Console.WriteLine("Hello Thread");
        i++;
    }
    Console.WriteLine("Child Thread execution completed!");
}
```

FIGURE Q2

(5 marks)

- (b) Write an output based on the code program in **FIGURE Q2**. (3 marks)
- (c) Explain what will happen if the following C# program code is added into **FIGURE Q2**.

```
thread1.IsBackground = true;
```

(2 marks)

Q3 (a) Write the ASP code segment inside `<body></body>` to create a simple Graphical User Interface (GUI) for a login page. Consider the following:

- i. User needs to enter username and password to login
- ii. Login button ID is `btnLogin`

(10 marks)

(b) Based on answer in **Q3(a)**, write the missing C# code labelled as (i) and (ii) in **FIGURE Q3(b)**. The code behind is used to check if the username and password entered by a user is correct or not. Assume the table Register is created in the database. Consider the following:

- i. The correct username and password entered will be redirected to the `Homepage.aspx`.
- ii. The incorrect username and password will be clear up the username and password fields and `label.Text = "Login unsuccessful!"` will be display.

```
protected void btnLogin_Click(object sender, EventArgs e)
{
    Database connection code

    if (the username and password is match)
    {
        (i)
    }
    Else
    {
        (ii)
    }
}
```

FIGURE Q3(b)

(5 marks)

- Q4 (a)** Write a C# code segment to save the information entered by a user as shown in **FIGURE Q4(a)**. Assume **Table Q4(a)** is already created in the database.

Table Q4(a): Table Register

ColumnName	Data Type
username	varchar (50)
password	varchar (50)
email	varchar (50)

localhost:44338/RegisterPage.aspx

User Registration

Username:

Email Address:

Password:

Confirm Password:

FIGURE Q4(a)

(20 marks)

- (b)** Based on answer in **Q4(a)**, write the C# code segment which will check the availability username entered by a user from the database. If the entered username has already existed in the database, it will show "Username already exists". Otherwise, it will show "Username is available" as in **FIGURE Q4(b)**. Consider the information in **Table Q4(b)**.

Table Q4(b): Control properties

Control	Properties
Textbox	ID - txtUsername AutoPostBack = True OnTextChanged = txtUsername_TextChanged"
Label	ID - lblUsernameErrorMsg

TERBUKA



localhost:44338/RegisterPage.aspx

User Registration

Username: Username is available

Email Address:

Password:

Confirm Password:

FIGURE Q4(b)

(10 marks)

(c) Based on **FIGURE Q4(a)**, state and describe what kind of validation controls that may be used for the following conditions:

- i. If your confirm password entered does not match with the password in the password field.
- ii. If you enter the incorrect format of email address in the email field.

(5 marks)

- END OF QUESTIONS -

TERBUKA