



**UTHM**

Universiti Tun Hussein Onn Malaysia

**UNIVERSITI TUN HUSSEIN ONN MALAYSIA**

**FINAL EXAMINATION  
SEMESTER II  
SESSION 2015/2016**

COURSE NAME : STRUCTURAL ANALYSIS  
COURSE CODE : BPD 20403  
PROGRAMME CODE : BPC  
EXAMINATION DATE : JUNE/JULY 2016  
DURATION : 3 HOURS  
INSTRUCTION : ANSWER ALL QUESTIONS

**THIS QUESTION PAPER CONSISTS OF FIVE (5) PAGES**

- Q1** A plane-truss as shown in **Figure Q1** have been imposed loads at two points, namely B and C. The loads imposed are 12kN and 24kN at point B and 18kN at point C.
- (a) Analyse the stability of the plane-truss. (10 marks)
- (b) Calculate the internal forces of each member of the plane-truss using the method of joints. (15 marks)
- Q2** A frame as shown in **Figure Q2** has been imposed 5kN and 10kN loads at point C. The frame is pinned at point A and roller support at D.
- (a) Analyse the stability of this frame. (10 marks)
- (b) Calculate the internal forces of member AB, BC and CD by using the method of section. (15 marks)
- Q3** A cantilever beam as shown in **Figure Q3** is loaded with uniformly distributed load of 10kN/m along 6m. The cantilever beam also loaded with point loads of 20kN and 10kN at point C and D respectively.
- (a) Calculate the reaction forces at A. (5 marks)
- (b) Draw Shear Force Diagram (SFD) at point A, B, C and D. (10 marks)
- (c) Draw Bending Moment Diagram (BMD) at point A, B, C and D. (10 marks)

- Q4** A beam as shown in **Figure Q4** is subjected to point loads of 15kN and 10kN at points B and C.
- (a) Calculate the reaction forces at points A and D. (5 marks)
- (b) Compare with examples the Macaulay method and the Double Integration method for the calculation of deflection of this beam. (10 marks)
- (c) Calculate the deflection at points B and C using Macaulay method in EI form. (10 marks)

- END OF QUESTIONS -

FINAL EXAMINATION

SEMESTER / SESSION: SEM II / 2015/2016  
COURSE NAME : STRUCTURAL ANALYSIS

PROGRAMME : 2BPC  
COURSE CODE : BPD 20403

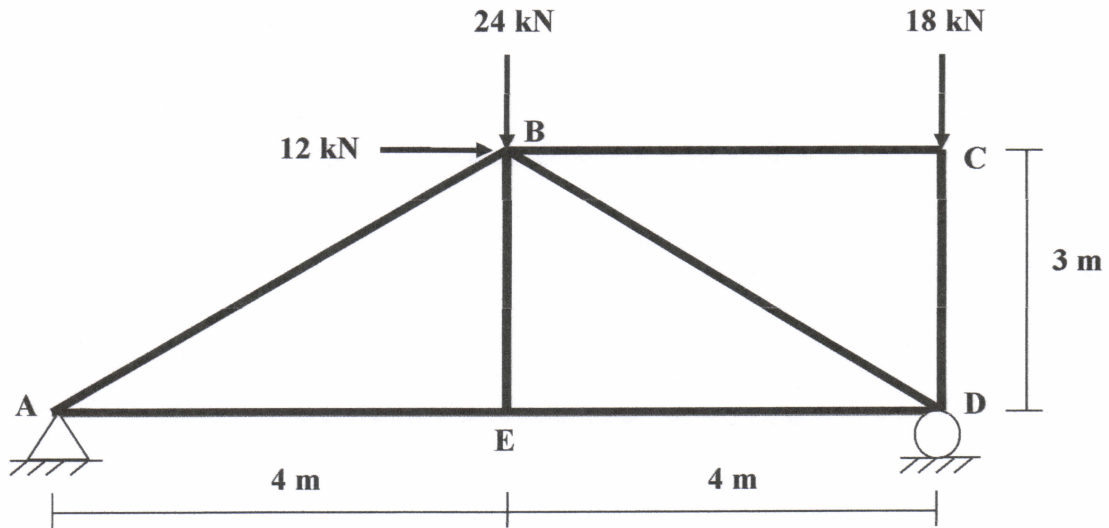


Figure Q1

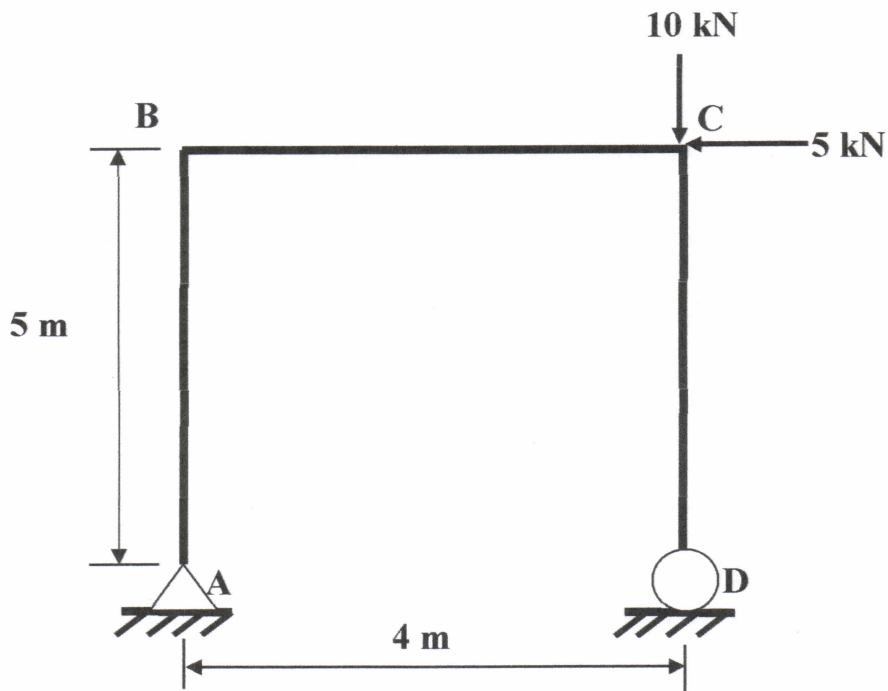


Figure Q2

ASSOCIATE PROFESSOR DR. NARIMAH KASIM, ICIOF  
Associate Professor  
Department of Construction Management  
Faculty of Technology Management and Business  
Universiti Teknikal Malaysia Melaka

FINAL EXAMINATION

SEMESTER / SESSION: SEM II / 2015/2016  
COURSE NAME : STRUCTURAL ANALYSIS

PROGRAMME : 2BPC  
COURSE CODE : BPD 20403

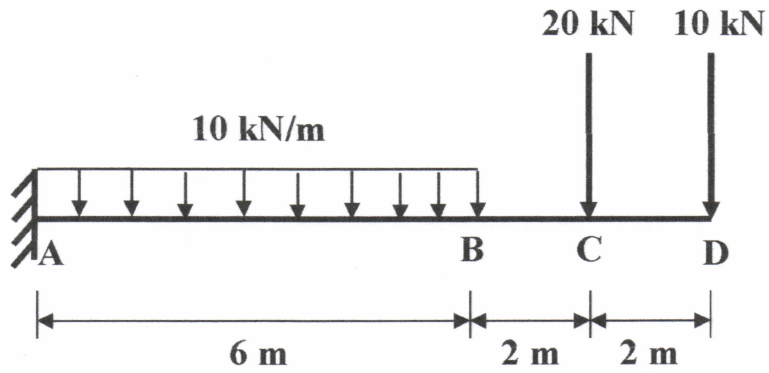


Figure Q3

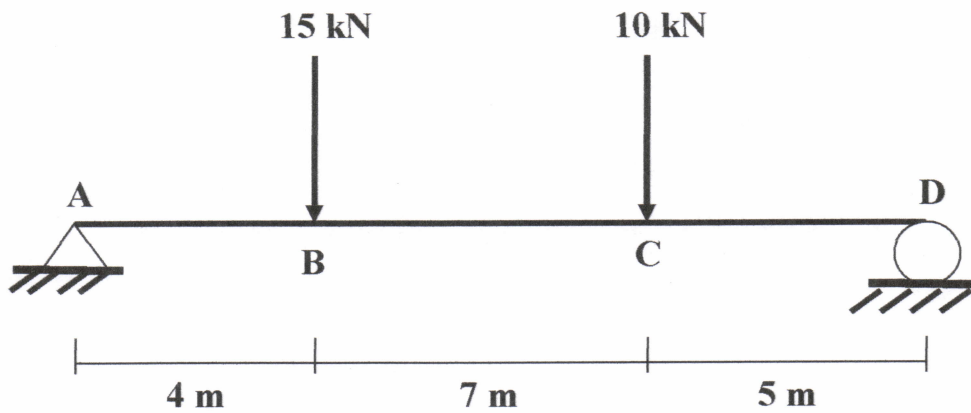


Figure Q4

ASSOCIATE PROFESSOR DR. HARIMAH KASIM, ICIOT  
Associate Professor  
Department of Construction Management  
Faculty of Technology Management and Business  
Universiti Teknikal Malaysia Melaka (UTeM)